



Darlington Rail Heritage Quarter Update Communities & Local Services Scrutiny Committee December 2022

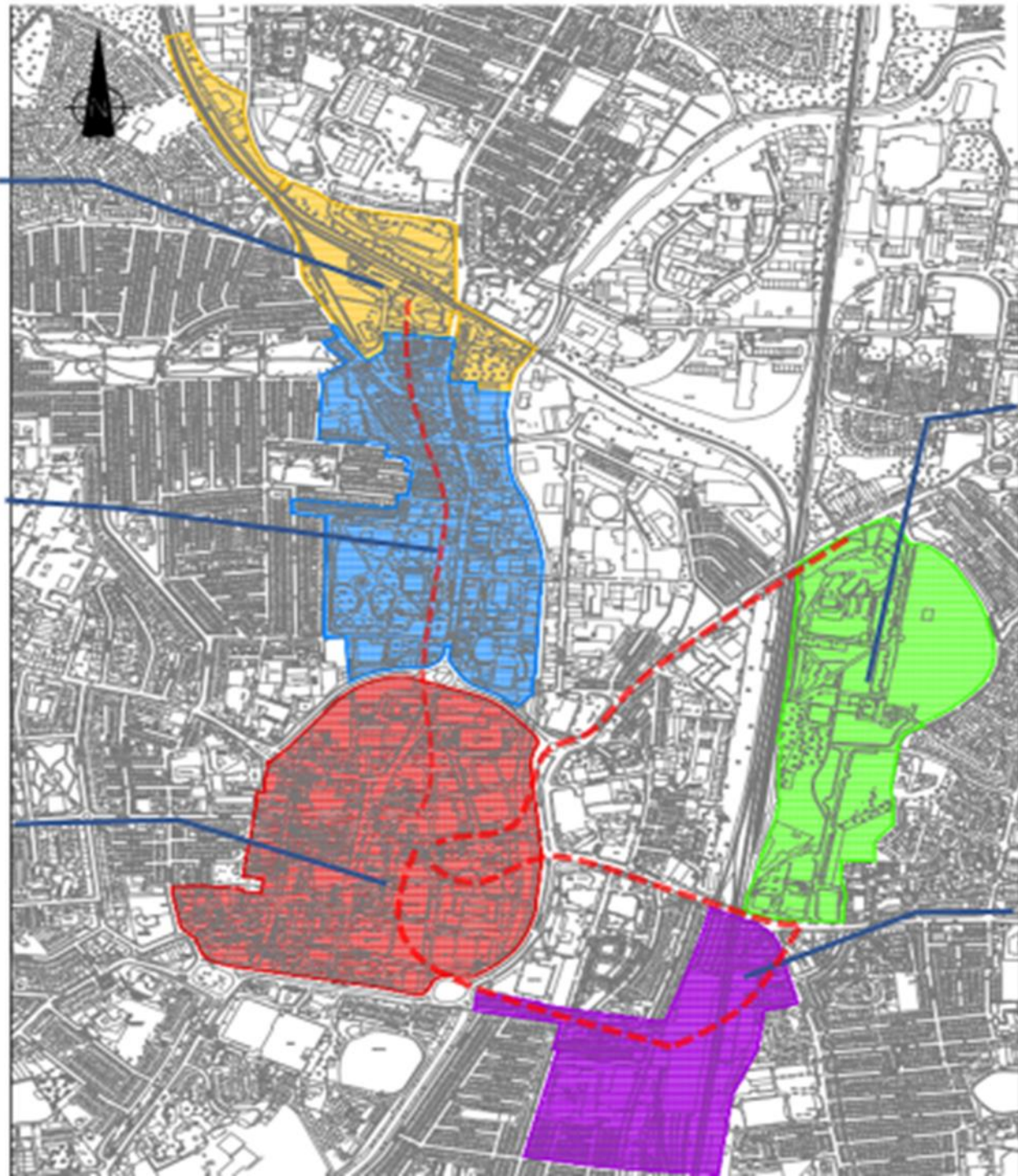


DARLINGTON
Borough Council

Rail Heritage
Quarter

Skerne Valley
& Liner Park

Town Centre



Central Park

Darlington
Station & Cattle
Market



1. To provide a high quality, accessible and safe environment for all users.
2. To provide a high quality, accessible and safe environment for all users.
3. To provide a high quality, accessible and safe environment for all users.
4. To provide a high quality, accessible and safe environment for all users.
5. To provide a high quality, accessible and safe environment for all users.
6. To provide a high quality, accessible and safe environment for all users.
7. To provide a high quality, accessible and safe environment for all users.
8. To provide a high quality, accessible and safe environment for all users.
9. To provide a high quality, accessible and safe environment for all users.
10. To provide a high quality, accessible and safe environment for all users.
11. To provide a high quality, accessible and safe environment for all users.
12. To provide a high quality, accessible and safe environment for all users.
13. To provide a high quality, accessible and safe environment for all users.
14. To provide a high quality, accessible and safe environment for all users.
15. To provide a high quality, accessible and safe environment for all users.
16. To provide a high quality, accessible and safe environment for all users.
17. To provide a high quality, accessible and safe environment for all users.
18. To provide a high quality, accessible and safe environment for all users.
19. To provide a high quality, accessible and safe environment for all users.
20. To provide a high quality, accessible and safe environment for all users.
21. To provide a high quality, accessible and safe environment for all users.
22. To provide a high quality, accessible and safe environment for all users.
23. To provide a high quality, accessible and safe environment for all users.
24. To provide a high quality, accessible and safe environment for all users.
25. To provide a high quality, accessible and safe environment for all users.
26. To provide a high quality, accessible and safe environment for all users.

SPACE

Scale	1:1000
North Arrow	
Author	
Date	

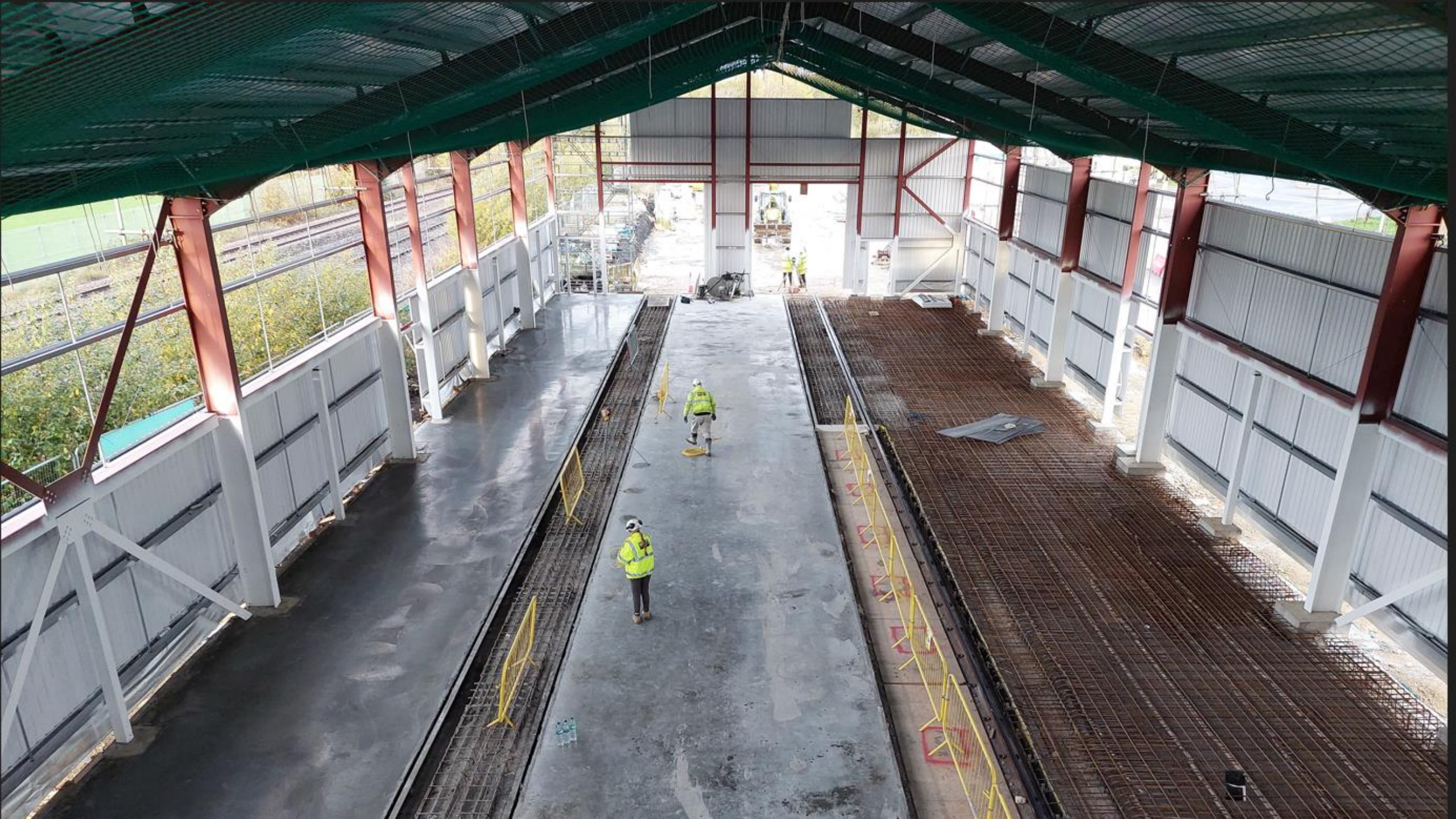


Timescale

	Q1-22	Q2-22	Q3-22	Q4 - 22	Q1-23	Q2-23	Q3-23	Q4 - 23	Q1-24	Q2-24	Q3-24
Phase 1 Mobilisation											
A1 Shed											
1861 Shed											
Goods Shed											
Head of Steam											
Play Area											
Carriage Works											
Lime Cells											
External Areas											
Private Siding											
Cycling and Walking											
Opening											



















North Road
Darlington







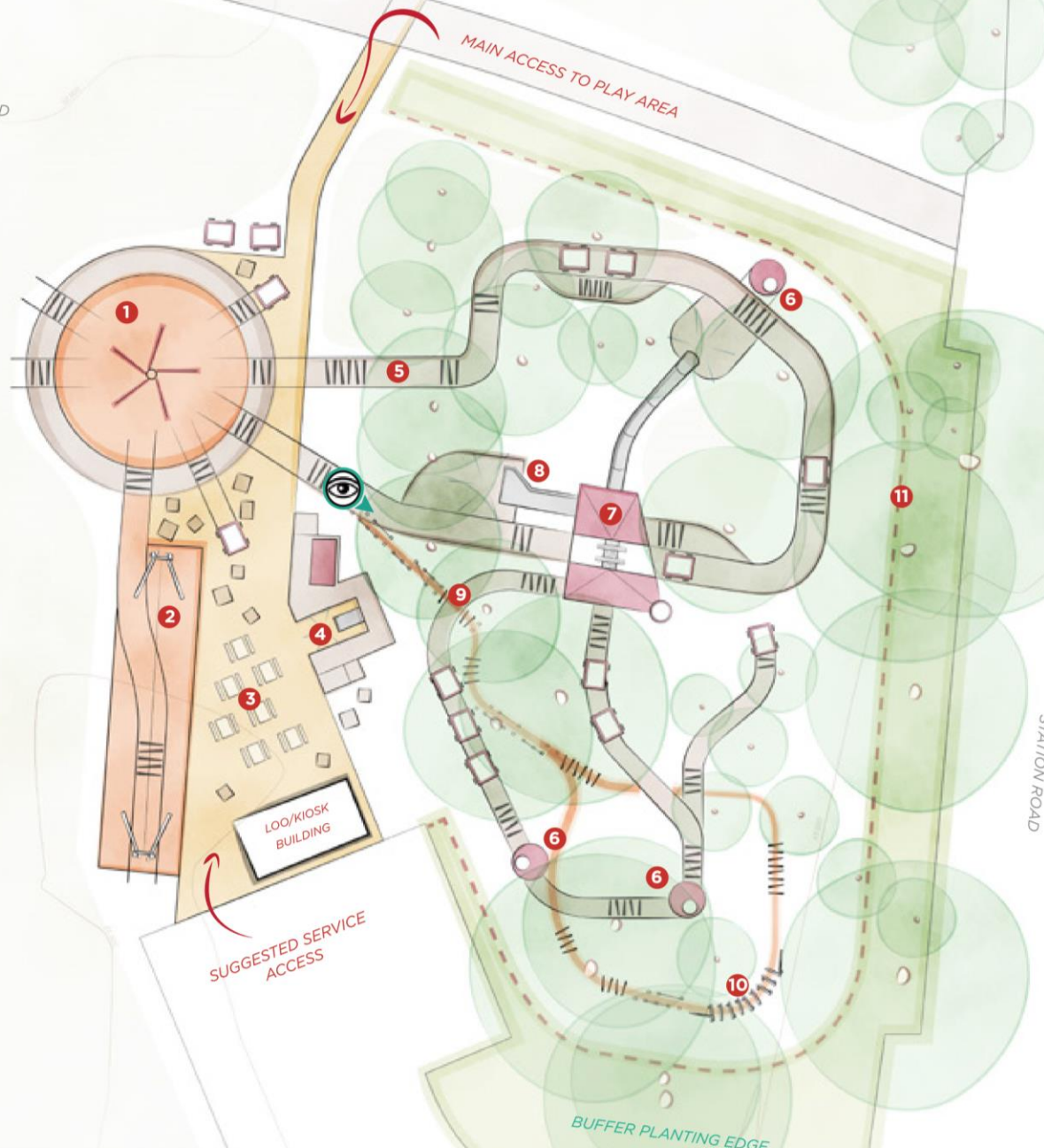




1825

1. **Turntable play**
A multi swing feature creates a dynamic and highly playable feature at the centre. The various play routes originate from the turntable feature.
2. **Accessible zip line**
Designed for toddler and children with accessible needs.
3. **Family seating area**
Seating options that could be in keeping with the cargo and goods depot theme of this area.
4. **Goods shed (Toddler)**
Based loosely on the architecture of the goods shed featuring a station-like building with walkways bridges and a slide. Design for toddler ages.
5. **Accessible incline track**
Suitable for wheel chair users this route wiggles its way through the tree up to height of 2.5m. On the way there are interactive features in the form of wagons and engine pieces.
6. **Cylinder engine towers**
These towers feature routes up and down connecting the incline tracks to ground level. They will be loosely based on the aesthetic of the blast pipe of the Locomotive No.1.
7. **Brusselton incline building**
This multi-level play feature connects to all the track routes in the woodland. It will be a unique play structure that celebrates the history of the railways. Featuring climbing walls, crawl tunnel, tubular slide and sensory play elements.
8. **Companion slide**
Suitable for wheelchair users this is an exciting play offer from the 2m deck level.
9. **High level woodland track**
Wiggling through the trees this walkway features wagons to explore and connects to other towers.
10. **Old railway ground play loop**
A low level journey throughout the woods weaving under the tracks above. This trail features a variety of balance features. Including a fish bellied balance beam and a 'sleeper stepping stone'.
11. **Internal timber fence**
Creating a play safe boundary to the site with an internal timber fence within the existing security fence. The space between the 2 fences would be a planting buffer zone reducing temptation to break into the play site at night and improve play setting backdrop.

EVENTS FIELD



TO THE GOODS SHED

STATION ROAD

BUFFER PLANTING EDGE

SUGGESTED SERVICE ACCESS

LOO/KIOSK BUILDING



*At this early conceptual stage - pre costing - it should







DARLINGTON
Borough Council

SPACE



STOCKTON & DARLINGTON RAILWAY BICENTENARY

Darlington's Rail Heritage Quarter

SKERNE BRIDGE



STOCKTON & DARLINGTON RAILWAY BICENTENARY

Darlington's Rail Heritage Quarter

HEAD OF STEAM



STOCKTON & DARLINGTON RAILWAY BICENTENARY

Darlington's Rail Heritage Quarter

BLACKBOX EXPERIENCE



Illustration is indicative and for visual purposes only.



DARLINGTON

Questions

